

**1111 14th Street, NW
Washington, DC 20005**

Office Space

2,187 square feet (Ninth Floor)

Available

October 2008

Base Rental

\$34.00 per square foot

Lease Term

Five (5) – Ten (10) years

Location

14th & L Street location just South of Thomas Circle, one and a half blocks from the McPherson Metro Station.



Description

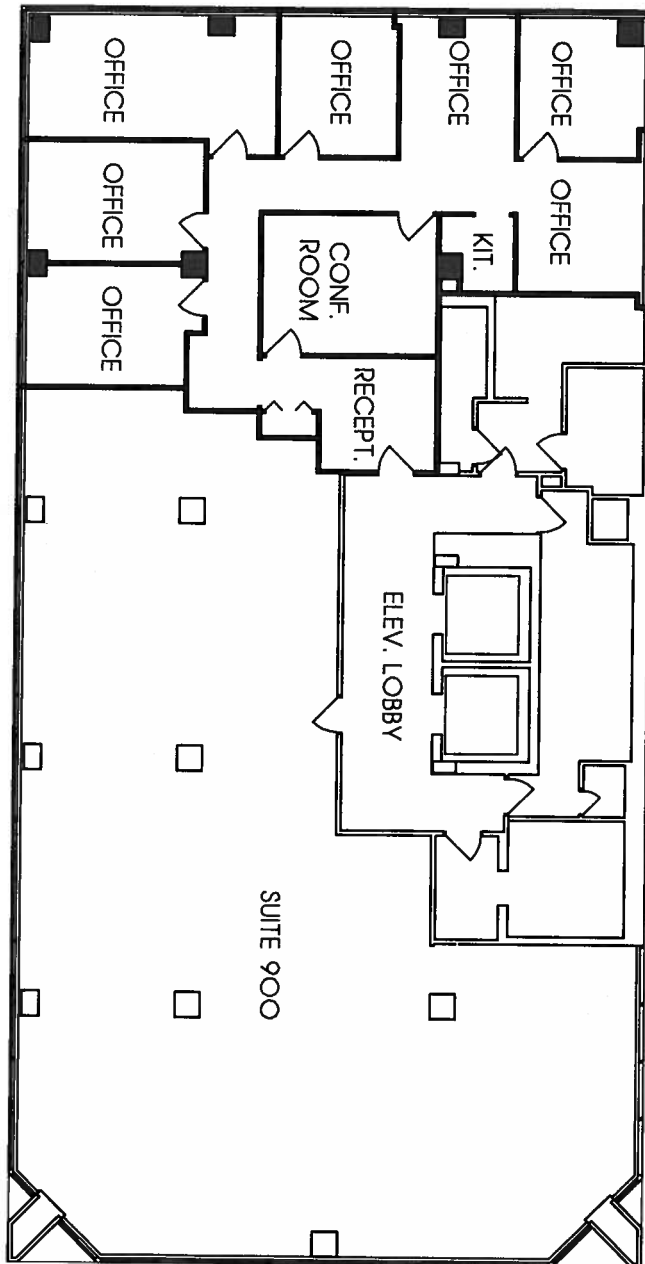
All of the common areas were renovated which include new ADA compliance rest rooms, life/safety improvements - sprinkling of the entire building and a fire control system.


Operating Expenses & Real Estate Taxes

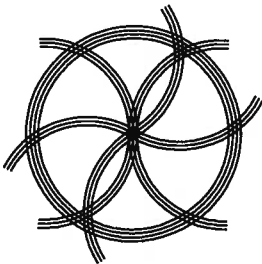
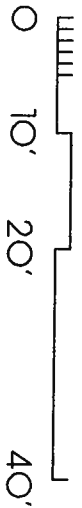
Proportionate Share

Security Deposit

Not less than one (1) month's full rent




 9TH FLOOR PLAN - SUITE 950
 1/16"=1'-0"
 (1111 14th - 9th)



Plan 9 Associates
 222 Aspen St. NW
 Washington DC 20012
 plan9x@gmail.com
 phone/fax: 202.882.2764

PROJECT: 1111 14TH ST. NW
 SUITE 950
 WASHINGTON DC 20005
 TITLE: SUITE PLAN
 DATE: 7-22-08
 SHEET 1 OF 1